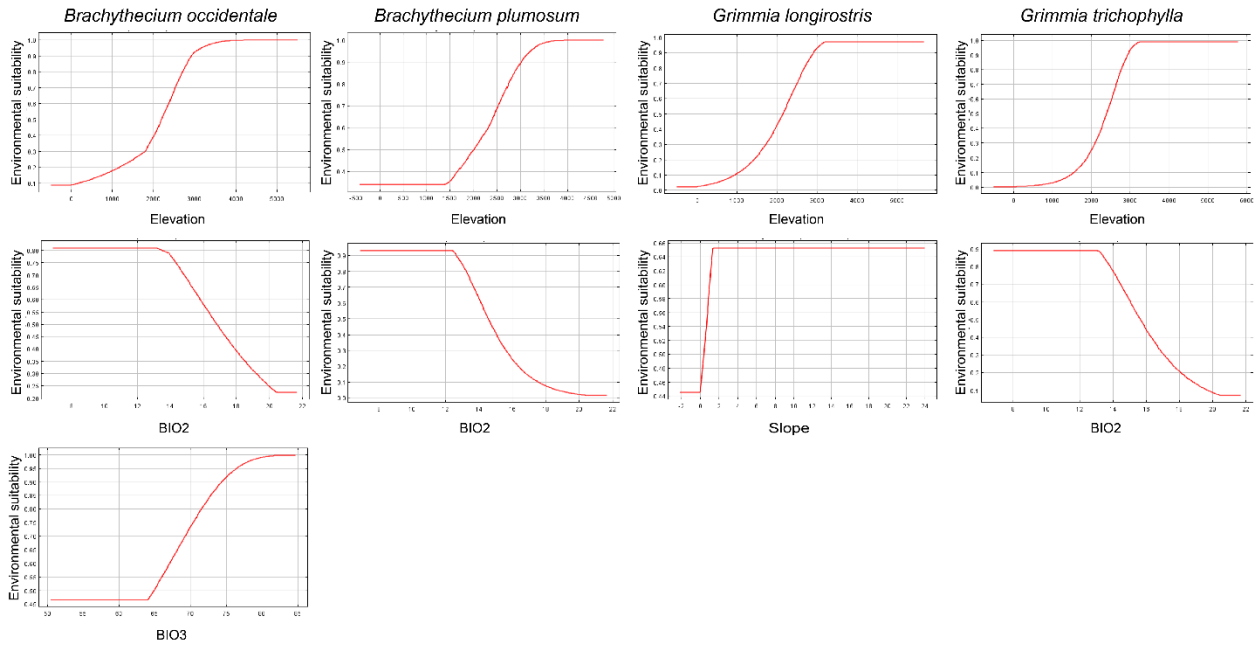
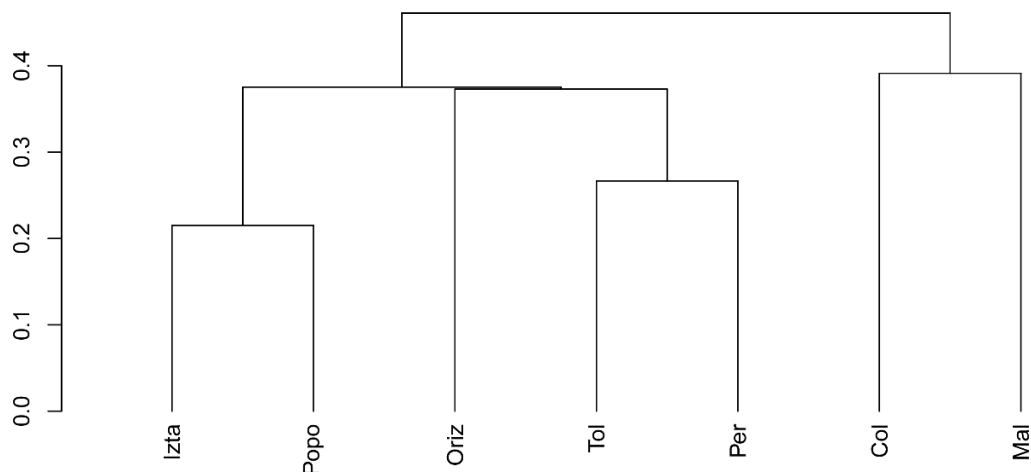


Supplementary material



Supplementary material Figure 1. Species response curves showing the relationship between predicted environmental suitability and each predictor used in the final model for each species.



Supplementary material Figure 2. Dendrogram based on the Sørensen dissimilarity index showing floristic similarity relationships among the mountain tops analyzed. Abbrev.: Izta, Iztaccíhuatl; Popo, Popocatepetl; Oriz, Pico de Orizaba; Tol, Nevado de Toluca; Per, Cofre de Perote; Col, Nevado de Colima; Mal, La Malinche.

Supplementary material Table 1. Species occurrence coordinates used for modeling. The number in parentheses following each species name (n) indicates the final number of occurrences used for each species.

| Species | Longitude | Latitude |
|---|------------------|-----------------|
| <i>Brachythecium occidentale</i> (n = 37) | -101.679 | 20.6125 |
| | -98.7125 | 20.1625 |
| | -98.5958 | 20.0791667 |
| | -98.6542 | 20.0041667 |
| | -98.9125 | 19.9458333 |
| | -102.679 | 19.9291667 |
| | -98.5792 | 19.9291667 |
| | -98.7292 | 19.9125 |
| | -98.4958 | 19.8291667 |
| | -99.1542 | 19.7625 |
| | -99.7625 | 19.7291667 |
| | -97.2292 | 19.7125 |
| | -99.4292 | 19.6291667 |

| | |
|----------|------------|
| -97.0458 | 19.6125 |
| -96.9042 | 19.6041667 |
| -98.7458 | 19.5541667 |
| -98.5458 | 19.5541667 |
| -97.1625 | 19.5041667 |
| -102.179 | 19.4625 |
| -98.5792 | 19.4625 |
| -101.513 | 19.4291667 |
| -98.7458 | 19.4291667 |
| -99.1458 | 19.4125 |
| -99.2792 | 19.3625 |
| -99.0875 | 19.3375 |
| -98.7625 | 19.3291667 |
| -99.3792 | 19.3208333 |
| -98.0125 | 19.3041667 |
| -101.663 | 19.2625 |
| -98.6542 | 19.2125 |
| -99.0458 | 19.1625 |
| -99.1542 | 19.1458333 |
| -98.7042 | 19.1291667 |
| -99.7542 | 19.1041667 |
| -98.9625 | 19.0958333 |
| -98.0792 | 19.0791667 |
| -98.6792 | 19.0125 |

Brachythecium plumosum (n = 25)

| | |
|----------|------------|
| -98.2125 | 20.2291667 |
| -98.7042 | 20.1958333 |
| -98.7458 | 20.1125 |
| -98.6292 | 20.1041667 |
| -98.4792 | 19.8791667 |
| -96.7958 | 19.8625 |
| -97.4625 | 19.8541667 |
| -97.3458 | 19.8291667 |
| -101.863 | 19.7625 |
| -97.2292 | 19.7125 |
| -96.9125 | 19.6791667 |
| -100.796 | 19.6625 |
| -97.0125 | 19.6291667 |
| -99.4042 | 19.5791667 |
| -98.5792 | 19.4625 |
| -98.7625 | 19.3291667 |
| -98.6292 | 19.2791667 |
| -99.2958 | 19.2625 |
| -98.2958 | 19.2625 |
| -98.7125 | 19.2291667 |

| | | |
|--------------------------------------|----------|------------|
| | -98.7042 | 19.1291667 |
| | -98.9792 | 19.0958333 |
| | -99.7458 | 19.0625 |
| | -97.2625 | 19.0541667 |
| | -98.6792 | 19.0125 |
| <hr/> | | |
| <i>Grimmia longirostris</i> (n = 50) | -102.529 | 21.7375 |
| | -102.838 | 21.3041667 |
| | -99.4708 | 20.4208333 |
| | -99.6292 | 20.3041667 |
| | -98.7042 | 20.1958333 |
| | -99.9792 | 20.1791667 |
| | -99.4292 | 20.1791667 |
| | -100.154 | 20.1708333 |
| | -98.7458 | 20.1125 |
| | -98.6292 | 20.1041667 |
| | -99.3458 | 20.0541667 |
| | -98.5292 | 20.0291667 |
| | -98.3792 | 19.9791667 |
| | -98.7292 | 19.9208333 |
| | -100.779 | 19.8958333 |
| | -98.4708 | 19.8958333 |
| | -99.8458 | 19.8541667 |
| | -102.079 | 19.8041667 |
| | -99.3375 | 19.7708333 |
| | -98.7958 | 19.7708333 |
| | -98.5708 | 19.7708333 |
| | -99.7708 | 19.7291667 |
| | -98.0958 | 19.6708333 |
| | -97.0458 | 19.6208333 |
| | -98.8208 | 19.5791667 |
| | -103.621 | 19.5708333 |
| | -98.6708 | 19.5708333 |
| | -97.2458 | 19.5708333 |
| | -97.1292 | 19.5708333 |
| | -99.4708 | 19.5541667 |
| | -99.2375 | 19.5291667 |
| | -97.2208 | 19.4791667 |
| | -99.3792 | 19.4208333 |
| | -98.7208 | 19.3291667 |
| | -99.3208 | 19.3208333 |
| | -100.429 | 19.3041667 |
| | -98.0208 | 19.3041667 |
| | -99.1625 | 19.2875 |
| | -99.2792 | 19.2208333 |

| | | |
|--------------------------------------|----------|------------|
| | -98.6792 | 19.2208333 |
| | -98.9292 | 19.1958333 |
| | -98.3625 | 19.1791667 |
| | -99.7458 | 19.1708333 |
| | -99.2208 | 19.1458333 |
| | -98.6208 | 19.1208333 |
| | -99.5208 | 19.1041667 |
| | -99.6292 | 19.0791667 |
| | -97.2708 | 19.0541667 |
| | -99.1625 | 19.0208333 |
| | -97.2292 | 18.9708333 |
| <hr/> | | |
| <i>Grimmia trichophylla</i> (n = 29) | -98.7208 | 20.1708333 |
| | -98.5792 | 20.1208333 |
| | -98.6292 | 20.0208333 |
| | -98.4708 | 19.8958333 |
| | -98.5458 | 19.8041667 |
| | -99.7708 | 19.7291667 |
| | -99.4708 | 19.7291667 |
| | -97.1208 | 19.6291667 |
| | -103.596 | 19.5791667 |
| | -102.029 | 19.5791667 |
| | -99.4958 | 19.5708333 |
| | -97.2458 | 19.5708333 |
| | -99.5958 | 19.5541667 |
| | -97.2042 | 19.4458333 |
| | -99.3792 | 19.4208333 |
| | -98.7208 | 19.3291667 |
| | -100.096 | 19.3208333 |
| | -99.3708 | 19.3208333 |
| | -99.5458 | 19.3041667 |
| | -98.0208 | 19.3041667 |
| | -99.2792 | 19.2208333 |
| | -98.6542 | 19.2208333 |
| | -99.7958 | 19.1791667 |
| | -98.5458 | 19.1708333 |
| | -98.7042 | 19.1291667 |
| | -99.7208 | 19.1208333 |
| | -97.2292 | 19.1208333 |
| | -98.9708 | 19.1041667 |
| | -98.6292 | 19.0541667 |
